

imarble
INCREDIBLY ITALIAN

1200x1800 ~15mm

S T O N E W A R E

QUTONE
INNOVATIONS & MORE...



1200x1800 ~15mm **STONEWARE**

iMarble Stoneware is made with Finest Quality Raw Materials using the most Advanced Manufacturing Technology, hence Smartly Eliminates the disadvantages of Italian/Natural Marbles, Artificial Marbles, Quartz, Granite etc. while provides Excellent Technical & Physical Characteristics.

iMarble Stoneware performs exceptionally well as Lift Fascia, Foyer, Corridor, Façade and enhances the service life of Floors in High Pedestrian Traffic Areas such as Shopping Malls, Retail Stores, Public Buildings, Hotels, Airports, Office Complexes, IT Buildings etc. where flooring must be highly resilient to Wear, Unalterable due to weather & working conditions and do not require demanding care & maintenance.

Besides its high durability, iMarble Stoneware possess exceptionally high resistance to UV Lights/Sun Rays, Temperature, Scratch, Stain and is completely Resin Free thus safe for Humans & Pets.

The highest standards of Functional, Physical, Technical & Aesthetic properties of iMarble Full Body Stoneware makes it an ideal Product Solution for possibly all sorts of Indoor & Outdoor Surface Coverings.



Features & Advantages



Water
Impermeable



UV
Resistant



Resistance to
High Temperature



Thermal Shock
Resistance



Frost
Resistance



High Flexural
Strength



Erosion
Resistant



Impact
Resistant



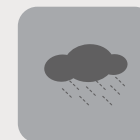
Chemical
Resistance



Stain
Resistance



Resin Free



Excellent
Weatherability



Hygienic
Surface



Resist Algae
Formation



Environment
Friendly



Easy to Clean



Pre-Polished



Easy to
Handling



No Toxic
Fumes



No Hazardous
Emittance



Easy & Safe
Disposal



Moldability



High Abrasion
Resistant



Flame
Resistance

POLISHED

1200x1800 ~15mm STONEWARE



Size:
1200x1800mm

Thickness:
15 mm

Finish:
Polished

Faces



Polished



Tivoli

Cento

Polished

Faces





Size:
1200x1800mm

Thickness:
15 mm

Finish:
Polished

Faces

Polished

Viola



Barley

Polished

Faces





Size:
1200x1800mm

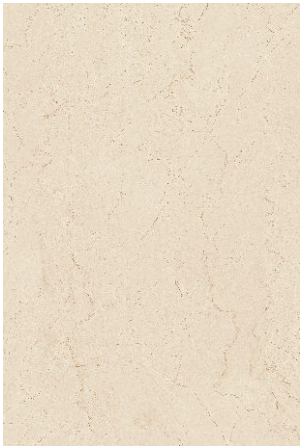
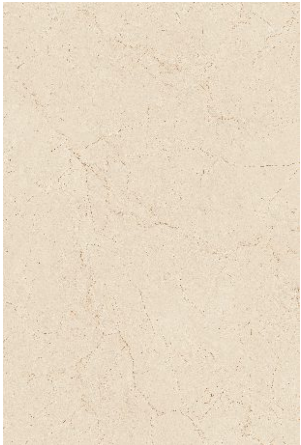
Thickness:
15 mm

Finish:
Polished

Faces

Polished

Balmore



Avola

Polished

Faces





Size:
1200x1800mm

Thickness:
15 mm

Finish:
Polished

Faces

Polished

Dayton



Franklin

Polished

Faces





Size:
1200x1800mm

Thickness:
15 mm

Finish:
Polished

Faces



Polished



Spiga

Casacade

Polished

Book-Match





Size: 1200x1800mm | Thickness: 15 mm | Finish: Polished

Faces



Polished



Habana



Nikola

Polished

Book-Match





imarble
INCREDIBLY ITALIAN

Size:
1200x1800mm

Thickness:
15 mm

Finish:
Polished

QUTONE
INNOVATIONS & MORE...

Faces

Polished

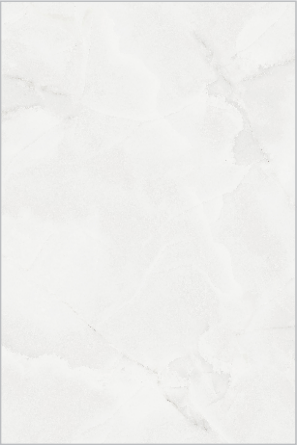
Orlam



Mercato

Polished

Faces



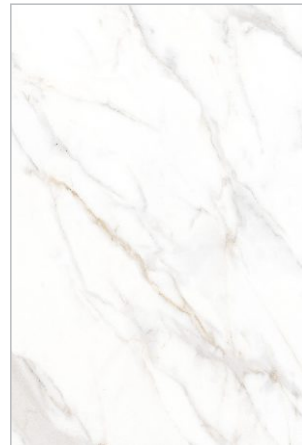


Size:
1200x1800mm

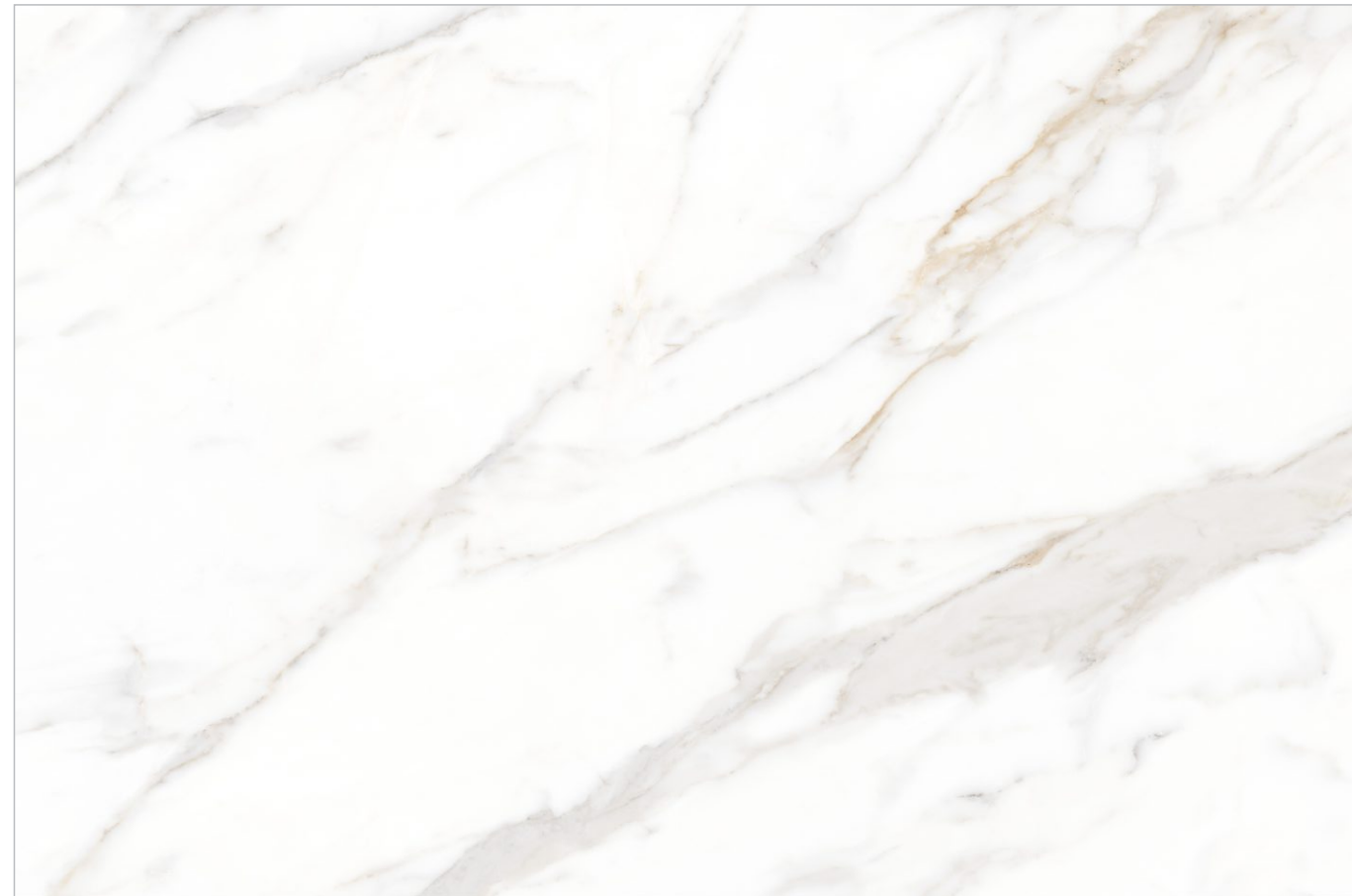
Thickness:
15 mm

Finish:
Polished

Faces



Polished



Cerrato

AURA

A Unique Surface

1200x1800 ~15mm **STONEWARE**

First time in Industry **Qutone** proudly introduced **"AURA Finish"** *A Unique Surface*

"AURA Finish" is more resilient to Daily Wear & Tear besides making it feel Softer and have **"Anti Skid"** property at the same time. The augmented Durability & Aesthetics is embraced through **"Aura Finish"** to provide the Aesthetic Look, Natural Feel and Performance through the unique blend of specialty Glazes.

Features



Anti Skid



Scratch
Resistant



Soft Touch
Feelling



No Deflection



Stain
Resistance



Size:
1200x1800mm

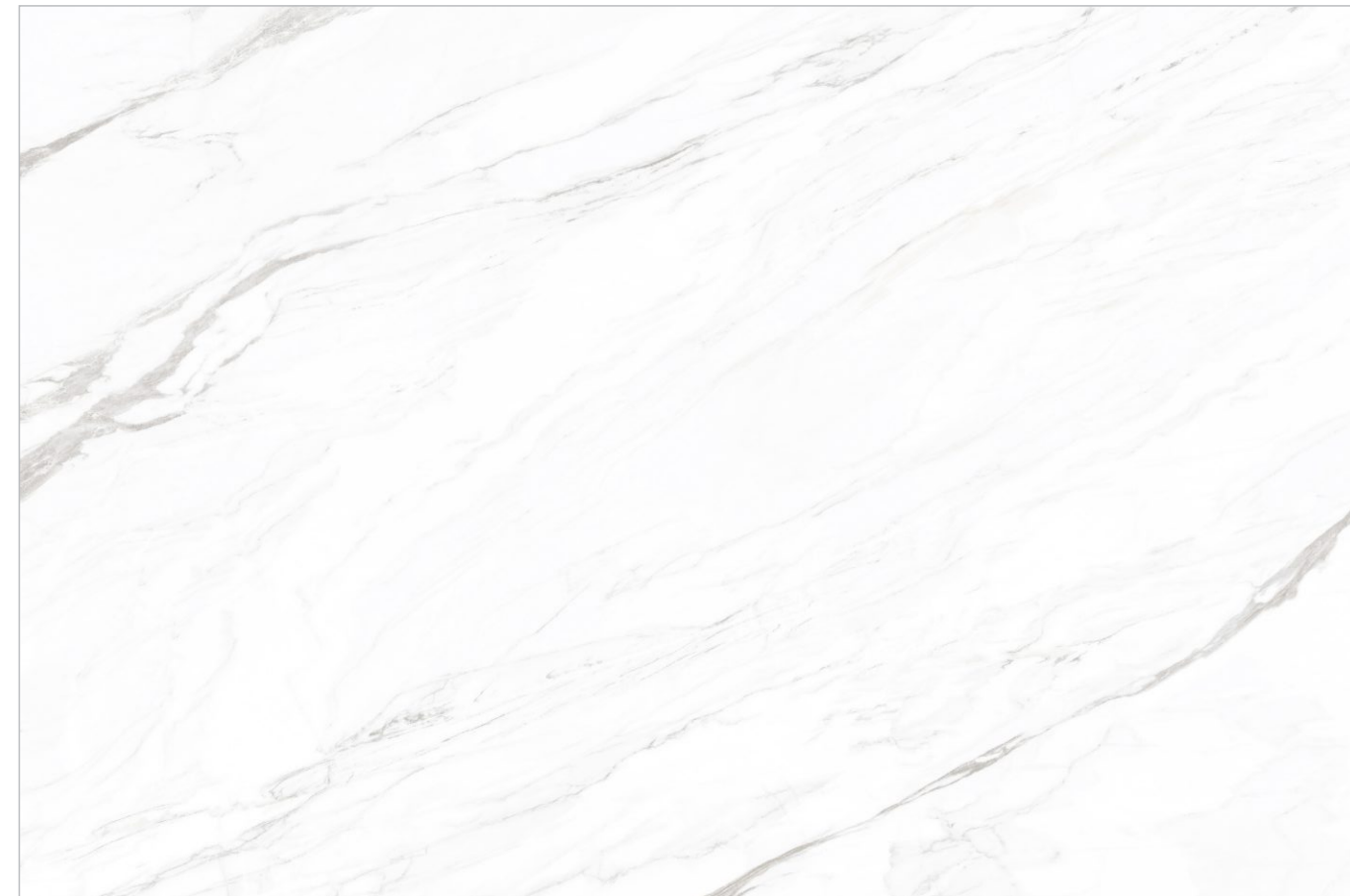
Thickness:
15 mm

Finish:
Aura

Book-Match



Aura



Maserati

Citron

Aura

Faces





imarble
INCREDIBLY EASY

Size:
1200x1800mm

Thickness:
15 mm

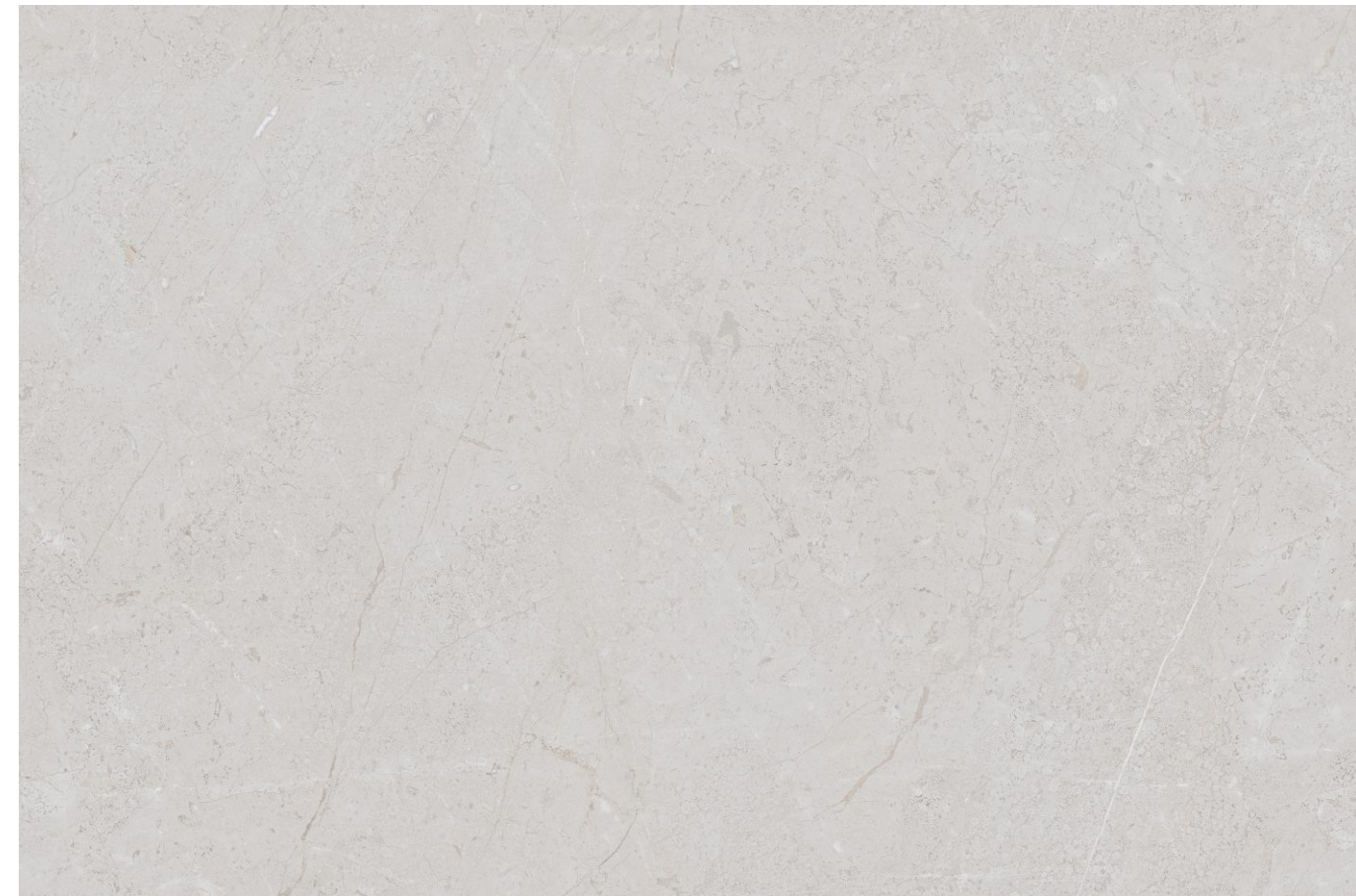
Finish:
Aura

QUTONE
INNOVATIONS & MORE...

Faces

Aura

Gilbern



Mexus



Aura

Faces



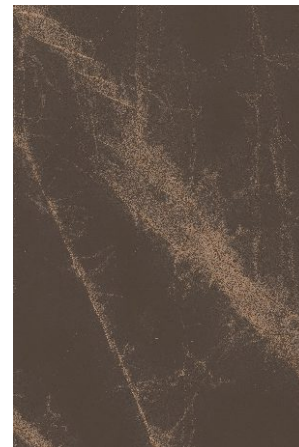


Size:
1200x1800mm

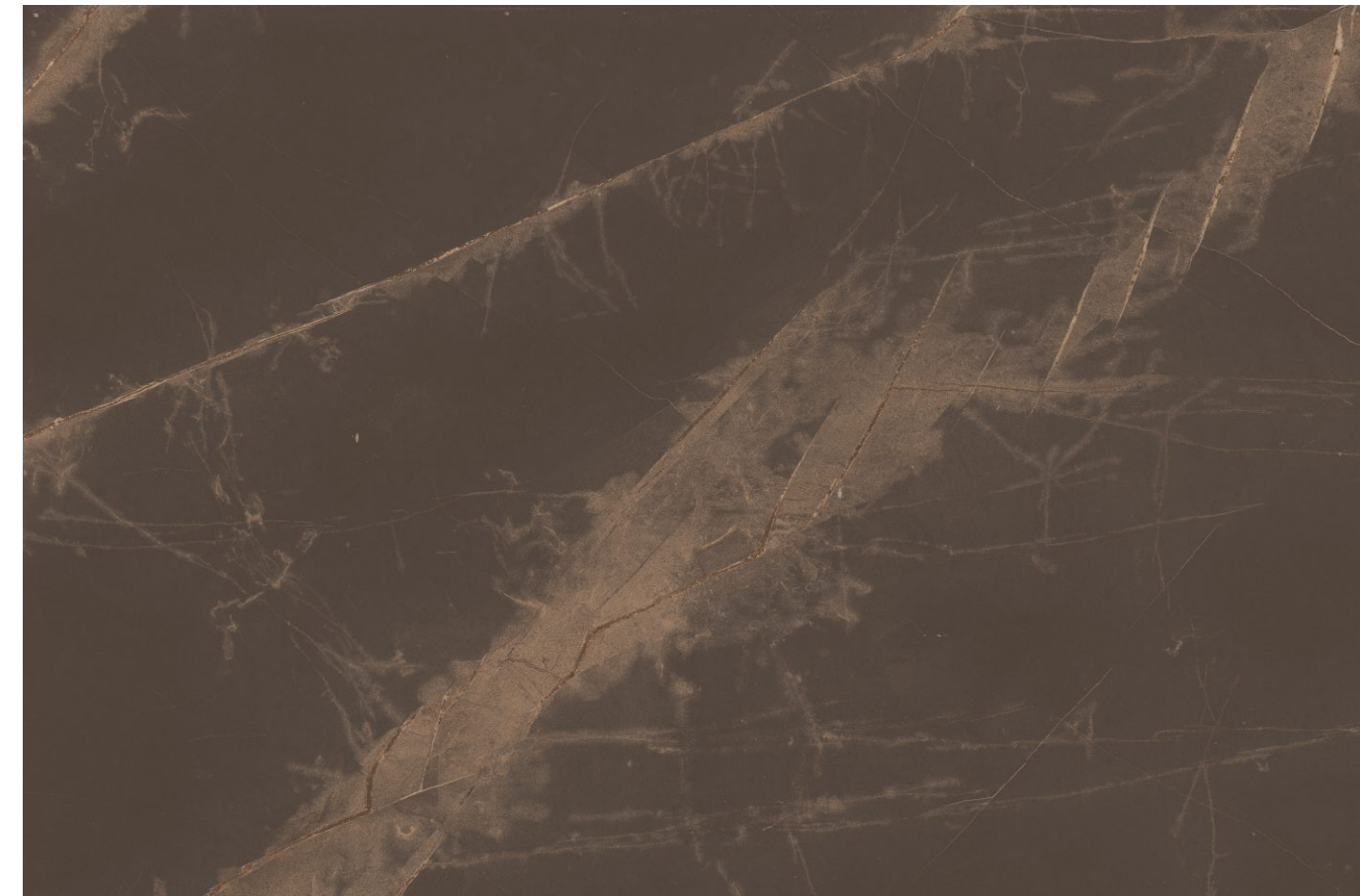
Thickness:
15 mm

Finish:
Aura

Faces



Aura



Bertone

Kaiser

Aura



Faces





Size:
1200x1800mm

Thickness:
15 mm

Finish:
Aura

Faces



Aura



Detroit

Care & Maintenance

Thanks to the characteristics of the production process (high firing temperature, raw materials of great quality, sinterization process), the surface of the Qutone Tiles & Slabs slabs are waterproof (the water absorption is minimum). Therefore the dirt cannot penetrate, but it is necessary to remove it from the surface.

For cleaning the surface, do not use detergents containing waxes or waxing products. In order to avoid the forming of greasy layers, for choosing the most appropriate detergent, refer to the following table. After the installation of floors, particularly those made with polished materials, the surfaces should be adequately protected with particle board or other suitable materials in order to protect the surface from dirt and damage due to on-site processing.

Below are some of the substances indicated to remove stains. The instructions are grouped by type of product and do not contain references to specific detergents. However, these features are clearly indicated on the labels of detergents available in the market.

Care Advice

Qutone Tiles & Slabs are high temperature resistant. However, it is always advisable to use an adequate pan-support whenever hot cookware should be placed on the slab surface. Use a chopping board to cut/prepare foods instead of bare Tile/Slab surfaces.

Qutone Tiles & Slabs are very tough and have high impact resistance, However- avoid falling of sharp object /heavy substances directly on to the surface.

Qutone Tiles & Slabs matt finishes have high scratch resistance compare to polished, satin & pearl finishes. However, avoid dragging, scrolling or moving heavy objects on the surface. Instead lift & move the objects from one place to another

Avoid using strong acids high concentration of floor cleaners. Manufacturer guidelines on the use of floor cleaners should be strictly followed.

Possible breakages can be repaired with adequate and specific resins. Before repairing, check that the colour of the resins that are used for the reparation operations and the slab colour are the same.

If stains have contracted on the Tile or Slab surface for a short time, they can be easily removed with the use of a rag and hot water. Avoid movement on damp surface.

Cleaning Advice

Cement adhesive	- Acidic detergent	Grease and dirt	- Bicarbonate and water
Grouting remnants	- Acidic detergent	Dyes	- Dilute bleach solution
Organic stains	- Alkaline detergent	Iodine or bromine Blood	- Acidic detergent, hydrogen peroxide or dilute bleach solution, ammonia
Felt pen	- Solvent (Methylated Spirits, Acetone, Ethanol)	Silicone	- Hydrogen peroxide or dilute bleach solution
Rubber remnants	- Alkaline detergent, Solvent	Coffee, Tea, Food, Fruit,	- Vitro-ceramic hob scraper, Cloth soaked in acetone. Normal detergent dissolved in hot water
Pencil marks	- Soft rubber	Juice or Make-up	- hydrogen peroxide or bleach

Technical Specification

Standards according to ISO 13006 / EN 14411 / IS 15622-2017 (Group B1a): Dry – Pressed Ceramic Tiles (Glazed Vitrified Tiles)

	CHARACTERISTIC	TEST METHOD	REQUIREMENTS	OUR STANDARD
DIMENSIONS & SURFACE QUALITY	Deviation in Length & Width	ISO-10545-02	± 0.10%	Within Criteria
	Deviation in Thickness	ISO-10545-02	± 5.00%	Within Criteria
	Straightness of Sides	ISO-10545-02	± 0.10%	Within Criteria
	Rectangularity	ISO-10545-02	± 0.10%	Within Criteria
	Surface Flatness	ISO-10545-02	± 0.50%	Within Criteria
	Surface Quality	ISO-10545-02	Min. 95% of the Tiles shall be free from visible defects that would impair the appearance of a major area of the Tiles	Within Criteria
PHYSICAL PROPERTIES	Water Absorbtion	ISO 10545-03	Average ≤ 0.08%, Individual 0.10% Max.	Within Criteria
	Modulus of Rapture	ISO 10545-04	R ≥ 35 N/mm ²	Compliant
	Breaking Strength	ISO 10545-04	Min. 1300 N	Compliant
	Moisture Expansion	IS 13630-3	0.02 Max	Compliant
	Moh's Hardness	EN 101	Min. 5	Compliant
	Surface Abration Resistance	ISO 10545-07	Class II Min.	Compliant
	Linear Thermal Expansion	ISO 10545-08	Max. 6.0 x 10 ⁻⁶	Compliant
	Thermal Shock Resistance	ISO 10545-09	Min. 10 Cycles	Compliant
	Crazing Resistance	ISO 10545-11	4 Cycles at 7.5 Bar Min.	Compliant
	Impact Resistance	ISO 10545-05	0.55 Min.	Compliant
	Frost Resistance	ISO 10545-12	Required	Compliant
	Resistance to Deep Abration (Unglazed Tiles)	ISO 10545-06	175 Max.	Compliant
	Bulk Density	IS 15622-2	2.20 g/cc	Compliant
CHEMICAL PROPERTIES	Resistance to High & Low Concentrations of Acids & Alkalis	ISO 10545-13	As per Mfg.	No visible effect
	Resistance to household chemicals & swimming pool salts	ISO 10545-13	Min. GB	Compliant
	Stain Resistance	ISO 10545-14	Min. Class 3	Compliant

Packing Details (Per Box)

Dimension	Pcs.	Sq. Mtr.	Sq. Ft.
1200x1800 – 15mm	1	2.16	23.25

Disclaimer: Product images shown in this Catalogue are for Design Representation. All efforts are made to show accurate colour of the product but actual product colour may differ from the printed image due to printing limitations. It is advised to see the product samples for actual colour reference • Shade variation is inherent characteristic of ceramic products. Hence different sizes and batches of same design may have variation in colours • Please follow the Tile Laying instructions printed on the box before installing the Tiles • Company may change the designs, colours, randomness or book-match without prior intimation • Due to continuous technology upgrade technical specification of the products may change without prior intimation.



QUTONE CERAMIC PVT. LTD.

Corporate

11, Titanium, Corporate Road, Opp. Prahalad Nagar Garden,
Satellite, Ahmedabad - 380015, Gujarat, India.
info@qutoneceramic.com



qutoneceramic.com